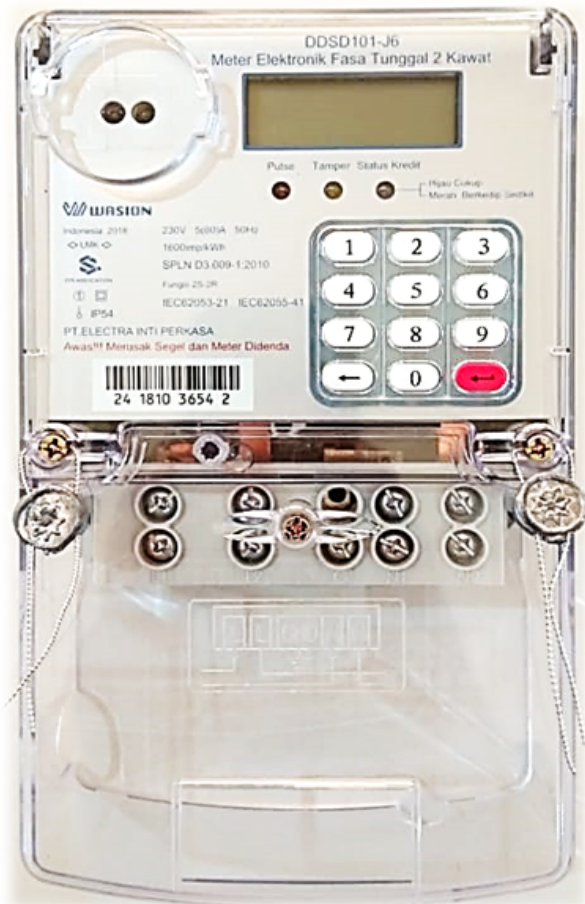


# DDSD101 - J6

Single - Phase Keypad Meter



Design for redential and small commercial consumers  
Providing a strong foundation for your Smart Grid initiatives

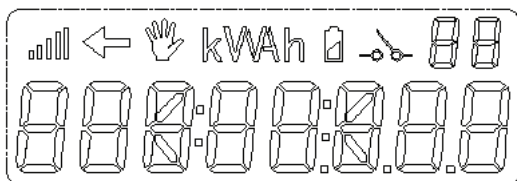
Description	Value
<b>Voltage</b>	
Reference voltage range	230V
Operating voltage range	50%-115%Un
<b>Current</b>	
Basic current	5A
Maximum current	60A
Starting current	<0.4%Ib
<b>Accuracy</b>	Class 1.0 (IEC), Class B (MID) for kWh Class 2.0 for kWh and kVAh
<b>Frequency</b>	
Rated frequency (fn)	50Hz
Frequency range	47.5Hz-52.5Hz
<b>LED Pulse Constant</b>	Default : 1600imp/kWh 1600imp/kVARh Factory Configurable Fixed After Delivery
<b>Temperature</b>	
Normal operation range	-25°C to +60°C
Limit operation range	-40°C to 60°C
Limit range for storage and transport	-25°C to 85°C
<b>Humidity</b>	30%~95%, non-condensing
<b>Power Consumption</b>	
Power consumption in voltage circuit	≤2W
Power consumption in voltage circuit	≤10VA
<b>Insulation Strength</b>	
AC voltage test	4kV
Surge Withstand	6kV
Protection class	Class II
<b>Electromagnetic Compatibility</b>	
Electrostatic discharge	Contact 8kV, air 1kV
Fast transient burst (Main Circuit)	4.4kV
Immunity to Impulse voltage (IEC62052-11)	8kV, The certification was performed at 6kV
External static magnetic field	400mT
Lighting surge	L<->N:4kV
<b>LCD Display</b>	
Digit size	8.0mm x 4.0mm
Number of digit	8
<b>MTBF</b>	≥60.000 Hours
<b>Lifetime</b>	≥10 Years
<b>Dimension</b>	L200 X W122 X H58(mm) (Extended terminal cover)

### Measurement

- Import and export of active energy
- Instantaneous Voltage, Current, Frequency, Active power, Reactive power and power factor.

### LCD Display

- LCD display screen with backlight



### Optical Interface

- Comply with IEC1107 standard

### Security

- 20 digit TOKEN for credit transfer, high security and reliability
- Cover open detection

### Display Function

- Cycle display
- Querying display
- Power down display

### Tamper Detection & Alarm

- Magnetic tamper detection
- Meter cover open, terminal cover open when power on and off
- Current reverse
- Bypass & Missing neutral
- Current injection on phase
- Current leakage

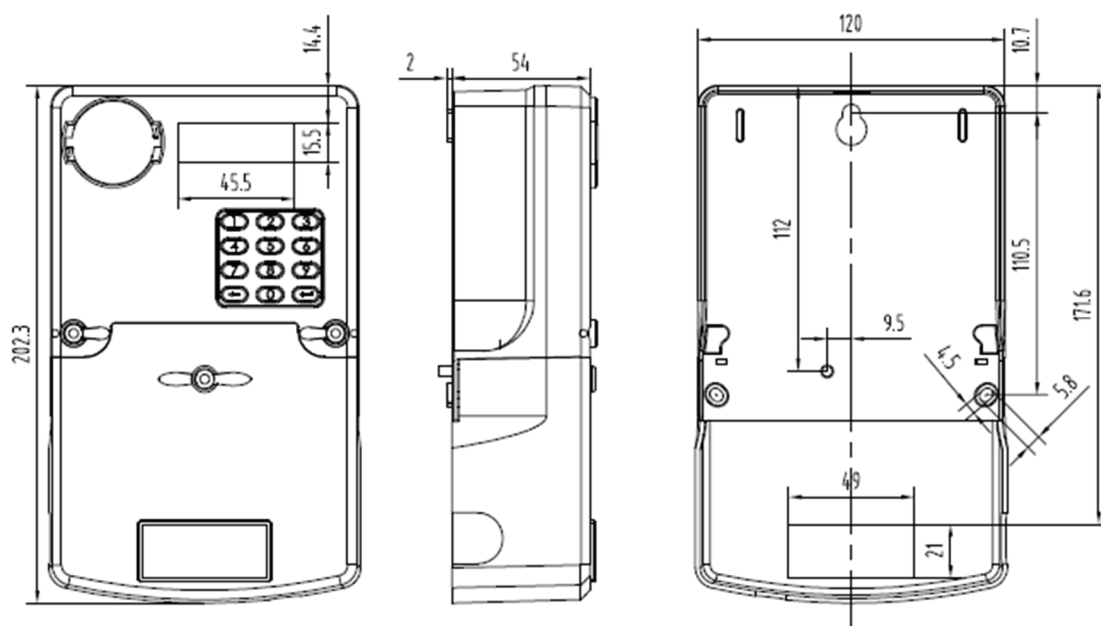
### Battery

- Super capacitor for at least 48Hours backup power off

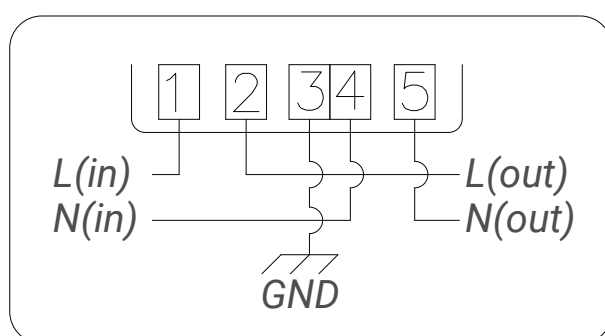
### Event Record

- Tamper detect (Meter cover open, Terminal cover open, Current reverse, Strong magnetic detect, etc)
- Power quality event (Overload, Power failure, etc)

## ■ Dimensions



## ■ Connection Diagram



**Distributed by :**  
PT. OTHO METRONIK INDONESIA

**Office :**  
Gold Coast Office Jl. Boulevard Pantai Indah Kapuk, Penjaringan- Jakarta Utara Telp (021) 50111581

**Factory :**  
Jalan Alternatif Tensaw Gang Sauki RT 004/RW005, Citeureup - Bogor, Telp.(021) 87975330